



Project	
Nomenclature	
Type	Date
Approval	
Notes	

Superior-grade, suspended mount LED low bay fixture. It is ideal for indoor use, where energy-efficiency, performance and ease of maintenance is essential. Its rugged design and superior light output make it an ideal fixture for low and high bay applications

Luminaire Summary

Features

- Operating temperature ranges available from -40C to 40C
- L70 of 145,000+ hours, L90 of 41,000+ hours
- Standard 0 - 10V dimming
- Available in 2700K, 3000K, 3500K, 4000K, 5000K and 6500K
- Lumen packages are available ranging from 2' 10L (10000lm) to 4' 24L (24000lm)

Approvals

- ETL certified to UL Canada and United States standards
- Made with UL Listed components

Mounting

- Holes provided for V-hangers, S-hook chain-mounting, or aircraft cables
- Optional pendant mount and surface mount brackets

Construction

- Manufactured in Ontario, Canada
- Cold-rolled steel parts are precision bent for added strength and rigidity
- Access panel provided for easy wiring
- Powder-coated finish in low-gloss white

Electrical

- Available in 120-277V, 347V and 480V

Options

- Motion sensors available
- Wireless Controls Available
- 90 and 95+ CRI Options Available

Ordering Information

Fill in the fields below with your product selections. If you need help with this section, [contact your local sales professional](#).



1	2	3	4	5
BLLA				

Series	Lumen Output	CRI	Colour Temp	Voltage
BLLA	2' 10L - 10,000lm	8 - 80 CRI	27 - 2700K	UNV - 120-277V
	2' 12L - 12,000lm	9 - 90 CRI	30 - 3000K	347 - 347V
	4' 14L - 14,000lm	1 - 95+ CRI	35 - 3500K	480 - 480V
	4' 15L - 15,000lm		40 - 4000K	
	4' 18L - 18,000lm	50 - 5000K		
	4' 20L - 20,000lm	65 - 6500K		
	4' 24L - 24,000lm			
**L - Custom lumen package or length				

6

Options

Lenses

L0	No Lens
L55	Clear Acrylic
L67	Frosted Acrylic

Cords

W3xx	White 16/3 (Specify Length)
W4xx	Black 16/3 (Specify Length)
W59xx	White 18/5 (Specify Length)
W***	Other Options Available*

Key.	Cord Length.	Key	Cord Length
6	6FT	15	15FT
10	10FT	20	20FT

Ex. W406 would be 16/3 Black, 6FT

Dimming

B11	0-10V Dimming Leads
B12	Line Voltage Dimming
B27	Dim-to-off Driver

Controls

WC10*	Encelium Wireless Controls
WC18*	NX Wireless Controls
WC19*	Avi-on Wireless Controls
WC22*	JDRF Wireless Controls

Motion Sensors

W26	Photocell Motion Sensor
W57	Dimming Motion Sensor (dims to 50% when unoccupied)
W53*	On/Off
W8*	High/Low
WX16	Microwave Dimmable Sensor
W**	Other Options Available*

Wire Guard

G1	Heavy Duty White
G5	Heavy Duty Black

Emergency Driver

B24	UL924 20W Battery Back-up
F8	UL924 Emergency Relay

Packaging

BLANK	Individually Boxed on Pallets
P0	Bulk Packaging
P**	Other Options Available*

Mounting

M1	V-Hangers
M2xx	V-Hanger with Aircraft Loop Cables
M3xx	Y-Toggle Aircraft Cables
M24	Single Pendant Mount(3/4 Hub)
M25	Surface Mount
M**	Other Options Available*

Key.	Aircraft Length.	Key	Aircraft Length
5	5FT	15	15FT
10	10FT	20	20FT









Ex. M305 would be Y-Toggle, 5FT

Warranty

CL7	10-Year Comprehensive Warranty Upgrade
-----	--




Documentation and Resources

All files and resources are available on our website for download. Files and resources are also embedded as links in this document, listed below. Additional files may be available upon request. Please contact your local sales agent [here](#) or contact sales@bjtake.com for more information.

-  BLLB - Installation Instructions
-  BLLA - Installation Instructions
-  BLLA-4FT-14L-840-L67
-  BLLA-4FT-15L-840-L67 96LEDHB
-  BLLA-4FT-15L-840-L67 112LEDHB
-  BLLA-4FT-18L-840-L67
-  BLLA-4FT-20L-840-L67
-  BLLA-4FT-24L-840-L67

Certifications and Listings

Certifications that apply to this fixture and its possible configurations are listed here. More information available upon request.

Icon	Description
	Wireless Controls Available
	ETL Listed
	90 and 95+ CRI Options Available

Usage Applications

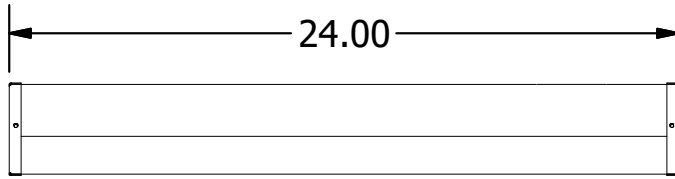
This fixture can be used in a variety of applications, and is ideal for the following:

Usage Application
Manufacturing Facilities
Storage & Warehousing
Gymnasiums
Retail Stores
Grocery Stores

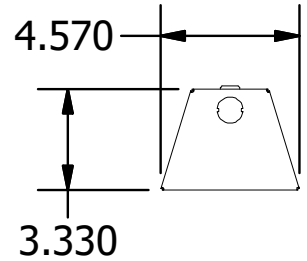
Warranty Statement

BJ Take products are tested and/or inspected prior to being packaged for shipment and are guaranteed from the day the product is shipped for a period of ten-year LED chip warranty and a five-year comprehensive component warranty. This can be upgraded to a ten-year comprehensive warranty on request.

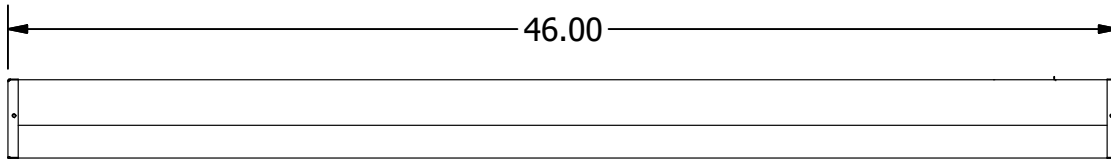
BLLA, 2 Foot, Side Dims



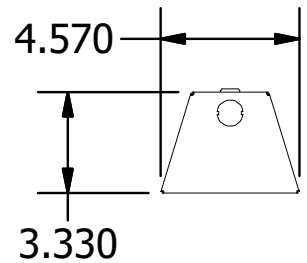
2FT End View



BLLA, 4 Foot, Side Dims



4FT End View



BLLA, 2 Foot Wattage

Length	Lumen Output	Actual Lumen Output	Fixture Wattage	Lumens per Watt
2'	10	9492.00	65.20	145.70
2'	12	11424.60	79.30	144.10

BLLA, 4 Foot Wattage

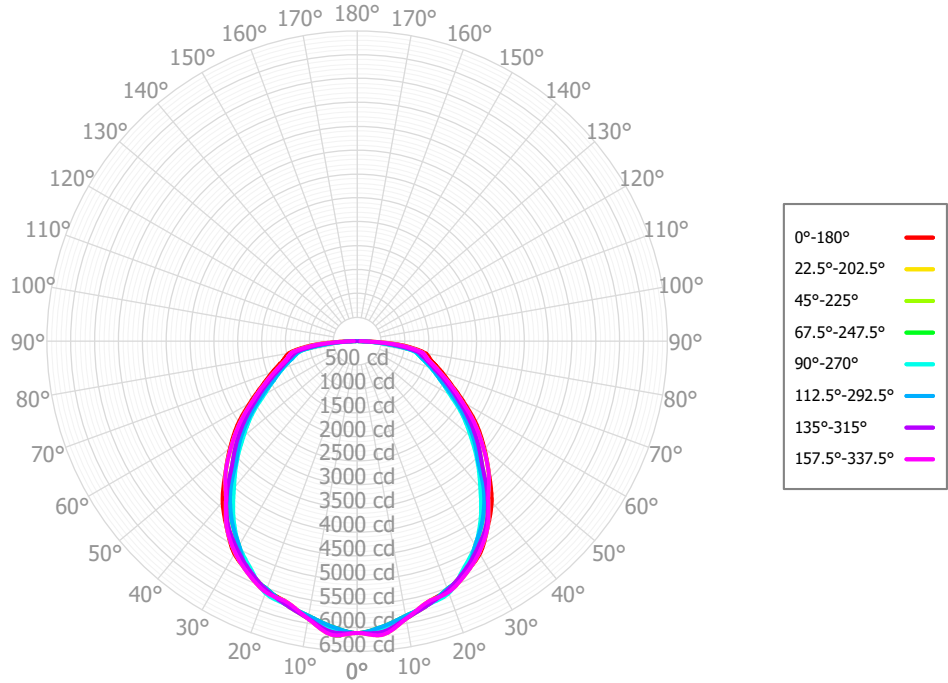
Length	Lumen Output	Actual Lumen Output	Fixture Wattage	Lumens per Watt
4'	14	13232.00	90.10	146.80
4'	15	14703.60	100.90	145.80
4'	18	17399.00	119.30	145.80
4'	20	18437.40	130.00	141.80
4'	24	22191.30	158.20	140.30

- * Drawings aren't to scale
- * Standard tolerances apply
- * Specifications may change without notice

BLLA-4FT-18L-840-L67

Cone of Light

Mtg Height	Light Level	Beam Diameter
6.0 ft	169.9 fc	16.9 ft
8.0 ft	95.6 fc	22.6 ft
10.0 ft	61.2 fc	28.2 ft
12.0 ft	42.5 fc	33.9 ft
14.0 ft	31.2 fc	39.5 ft
16.0 ft	23.9 fc	45.2 ft

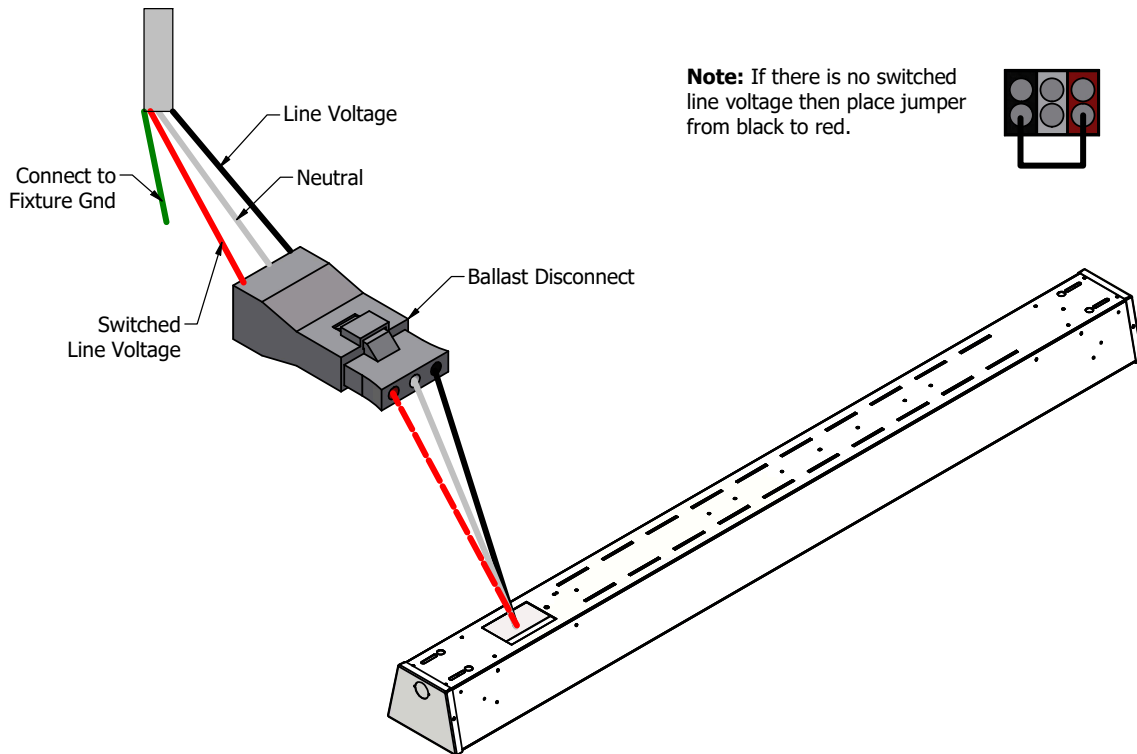


Based on BLLA-4FT-18L-840-L67, ie. (BLLA, 4 foot, 18000lm, 80 CRI, 4000K, w/ L67 Optics)

Emergency Battery Plan - 20W

Emergency Lighting	Solution System Components	System Operation
Option Code 'B17' - UL 924 listed components that are factory installed in the luminaire	UL 924 listed 20-watt battery integral to the luminaire	Loss of normal power is detected by the B17 emergency light solution and the power supply is switched automatically to the 20-watt integral battery pack which powers the emergency LED lighting driver.
	UL 924 listed LED emergency lighting driver integral to the luminaire	The battery pack and emergency LED driver are UL 924 certified to provide a minimum of 90-minutes of emergency lighting.
	Wiring options for both switched and unswitched emergency lighting	

Emergency Lighting Wiring



Important Information

More information on emergency lighting options and configurations available on request.