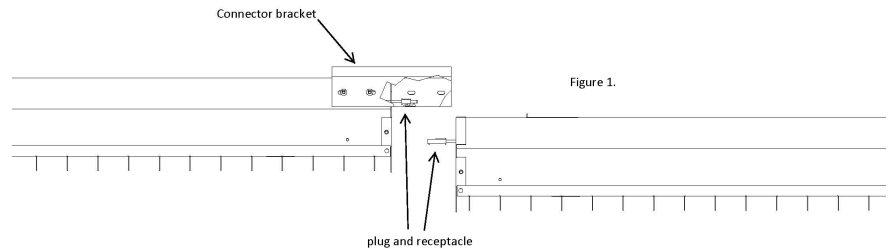


Instructions for row mounting with Inter-connect wiring

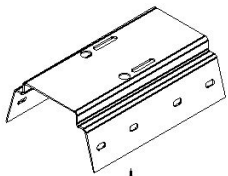
W22 row mount inter-connect

1. For connecting W22 style row mount fixtures, first mount the connector bracket onto the first fixture using four #8x1/2 screws as shown in Figure 1. Then install and connect the first fixture as per standard fixture mounting instructions.
2. Mount the connector bracket onto the second fixture using four #8x1/2 screws.
3. Connect the mating plug and receptacle from the two fixtures to form a secure connection. Push the connected assembly into one of the body channels of the luminaries.
4. Align and securely mount the second fixture onto the connector bracket to form a continuous row mount assembly.
5. Repeat steps 2-4 for installing more luminaries.



W27 row mount inter-connect

For connecting W27 style inter-connect fixtures, you may require a Coupler or a Power Jumper Cable or a Power Entry Cable depending on the needs of the project. Figure 3, Figure 4, and Figure 5 shows the Coupler, Power Jumper and Power Entry Cable.



Connector Bracket Figure 2

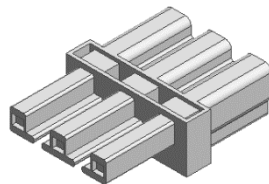


Figure 3



Figure 4



Figure 5

1. Install and connect wiring to the first fixture as per standard fixture install instructions.
2. If using the Power Entry Cord, connect it to the socket end of Fixture 1 (First fixture in the row).

3. For end to end row mount fixtures use the Coupler. First mount the connector bracket shown in Figure 2 onto the first fixture using four #8 screws as shown in Figure 1. To connect the next fixture in series, position the luminaires together as shown in Figure 6. Now connect the coupler to the plug-end of fixture 1 and then to the socket-end of fixture 2. After that, align and securely connect the fixtures to the Row Mount Bracket using eight #8 pan head screws to continuous row mount assembly.

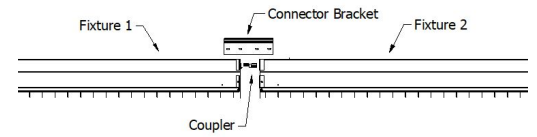


Figure 6

4. For fixtures using the Power Jumpers shown in Figure 4, install fixtures as per standard fixture install instructions. Then connect the power jumper from the power exit socket of the first fixture to the power entry socket of the second fixture, and so on, see Figure 7. The first fixture may use the Power Entry Cable, shown in Figure 5, or be wired directly, see standard fixture install instructions for wiring instructions.

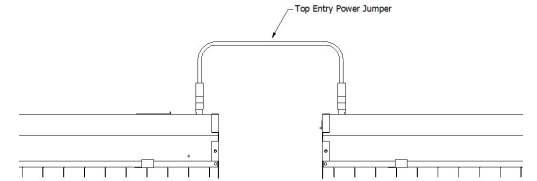


Figure 7

Note: Couplers, Power Cords, and Power Jumpers are inherently protected against mis-matches and can only connect one way to the luminaires to avoid any electrical hazards or shocks.

W27 WAGO Power Jumpers with Strain reliefs and WAGO Power Entry Cords with Strain reliefs can be ordered in varying lengths and styles. Also, these luminaires could be configured to have connectors coming out of end, top, or on side as shown below. Please contact your Sales representative more information.

